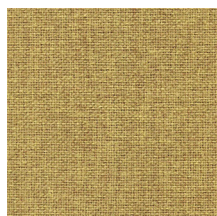
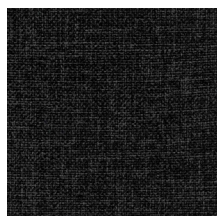


Citadel

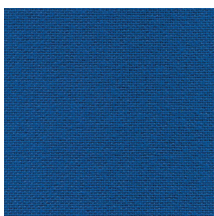
GRUPPE 1



Fortress FL821



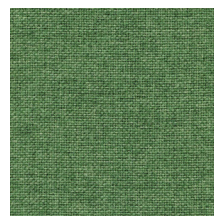
Ralstone FL768



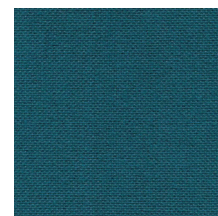
Augusta FL125



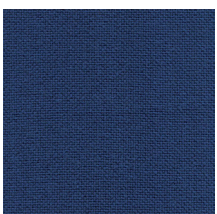
Elevation FL827



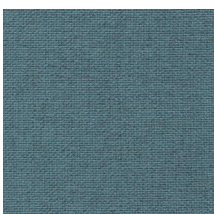
Drawbridge FL828



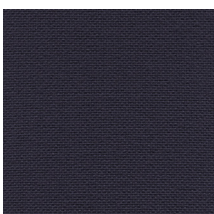
Abide FL829



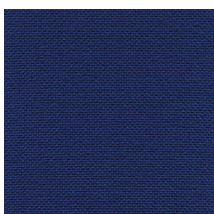
Stillwater FL757



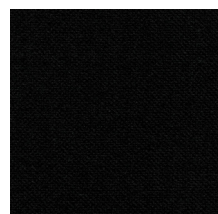
Resistance FL830



Defence FL831



Hamilton FL010



Craven FL019



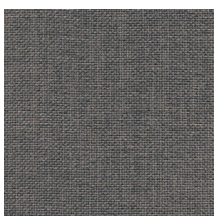
Palma FL114



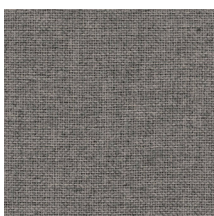
Beacon FL822



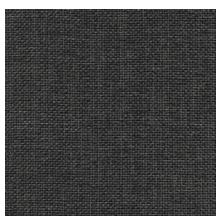
Redoubt FL832



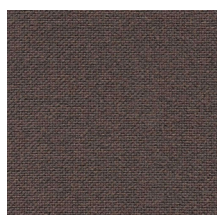
Confine FL833



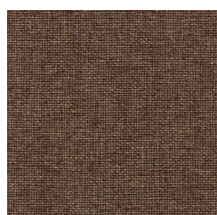
Lysegrå FL836



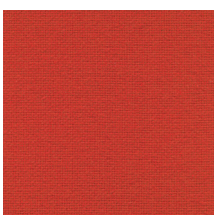
Anthracit FL835



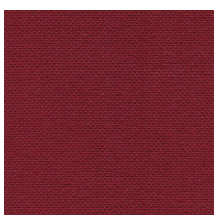
Hideaway FL824



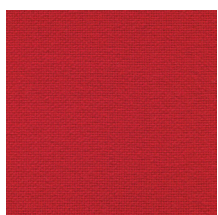
Manor FL823



Lookout FL825



Bingham FL801



Redstone FL076

SPECIFIKATIONER

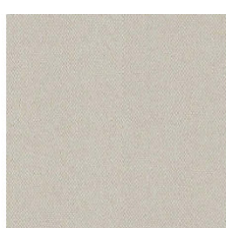
Composition	100% Flame Retardant Polypropylene
Light fastness	6 (ISO 105 - B02)
Guarantee	10 years

Flammability

EN 1021 - 1&2 (cigarette & match)
BS 7176 Low Hazard
DIN 4102 B1
ÖNORM B 3825 & A 3800-1 (58kg/m³ CMHR Foam)
UNI 9175 Classe 1 IM
EN 13501-1 Adhered Class B, s1, d0
EN 13501-1 Un-adhered Class B/C, s1, d0



CSE30
Transition



CSE01
Futurist



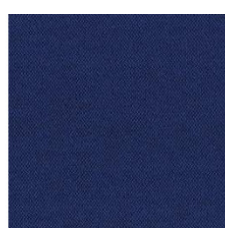
CSE38
Allowance



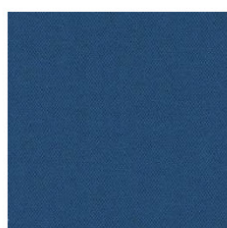
CSE39
Youth



CSE20
Aeon



CSE40
Maturity



CSE15
Stage



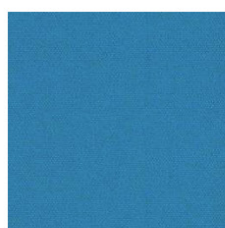
CSE08
Chapter



CSE43
Late



CSE42
Range



CSE10
Everlasting



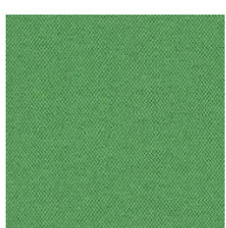
CSE12
Perennial



CSE33
Analogue



CSE07
Period



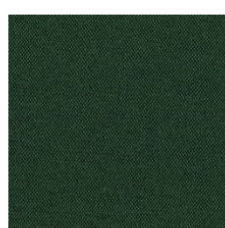
CSE18
Event



CSE34
Endurance



CSE16
Timelapse



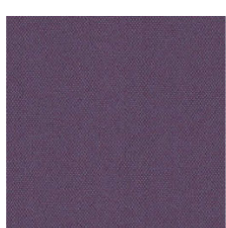
CSE35
Signature



CSE36
Notation



CSE37
Rest



CSE09
Prime



CSE41
Quota



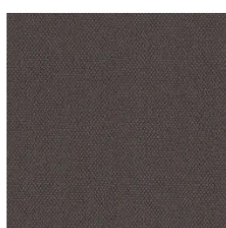
CSE23
Occurrence



CSE13
Present



CSE02
Generation



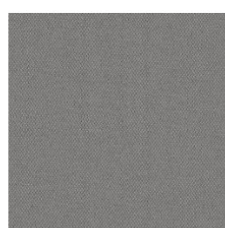
CSE21
History



CSE46
Memo



CSE44
Elapse



CSE11
Forecast



CSE31
Splitsecond



CSE19
Calendar



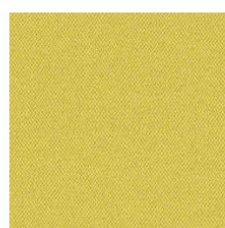
CSE25
Sequence



CSE45
Prompt



CSE27
Measure



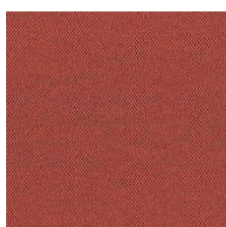
CSE03
Lifetime



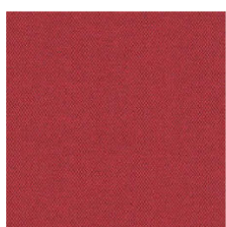
CSE32
Occasion



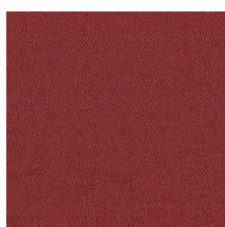
CSE05
Span



CSE29
Experience



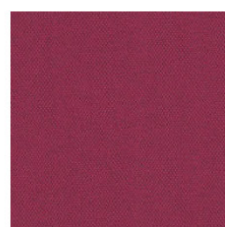
CSE06
Cycle



CSE28
Extent



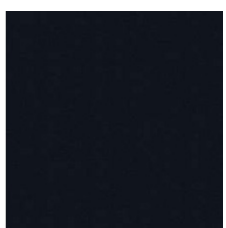
CSE26
Turn



CSE17
Phase



CSE24
Date



CSE14
Forward

SPECIFIKATIONER

Composition 100% Polyester
Light fastness 5 (ISO 105 - B02)
Guarantee 10 years

Flammability

EN 1021 - 1&2 (cigarette & match) / BS 7176 Low Hazard
EN 13501-1 Adhered Class B, s1, d0 / EN 13501-1 Un-adhered Class C, s1, d0

Optional:

BS 5852 Ignition Source 5 with EnviroFlam5 / BS 7176 Medium Hazard with EnviroFlam5
The Furniture and Furnishing (Fire Safety) Regulations 1988
(UK domestic cigarette and match) with EnviroFlam5
DIN 4102 B1 with FR Treatment (Gorts) / EN 13773 Class 1 with FR Treatment (Gorts)
BS 5867-2: Type B Curtains & Drapes with FR Treatment (Gorts)

Crisp

GRUPPE 2



SPECIFIKATIONER

Composition 93% New Zealand wool
7% Polyamide

Light fastness 5-7 — scale 1-8, max. 8
(EN ISO 105-B02)

Flammability

BS 5852 Part 1 0,1 Cigarette & Match, The Furniture and Furnishing Regulations 1988
BS 476 Part 7 class 2
BS EN 1021 1&2 Cigarette and Match
Class Uno UNI 9175 Class 1 | EMME
CA TB 117-2013
IMO MSC 307(88) Annex 1 part 8
MED Certificate IMO
IMO MSC 307(88) Annex 1 part 8 UK
MED Certificate IMO UK
ÖNORM A3800-B2-B3825-Q1 UK
BS 5852 Crib 5 (option flame retardant)