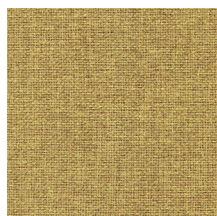
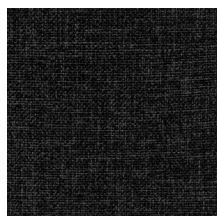


# Citadel

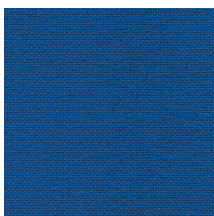
GRUPPE 1



Fortress FL821



Ralstone FL768



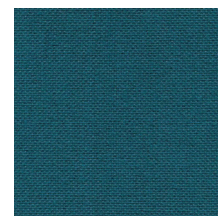
Augusta FL125



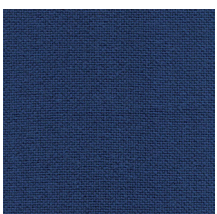
Elevation FL827



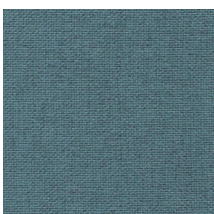
Drawbridge FL828



Abide FL829



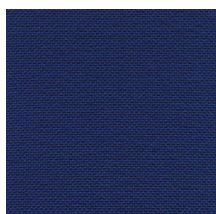
Stillwater FL757



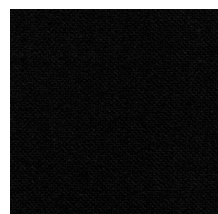
Resistance FL830



Defence FL831



Hamilton FL010



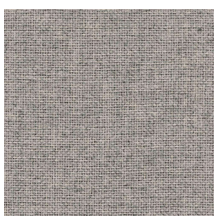
Craven FL019



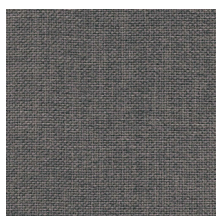
Palma FL114



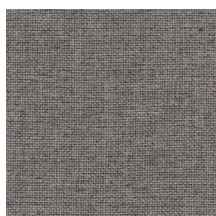
Beacon FL822



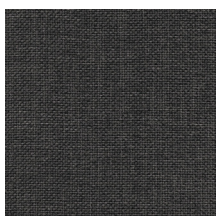
Redoubt FL832



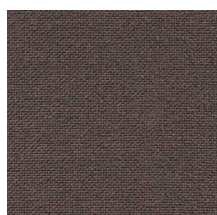
Confine FL833



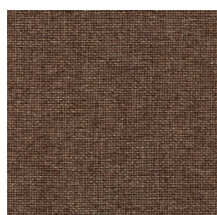
Lysegrå FL836



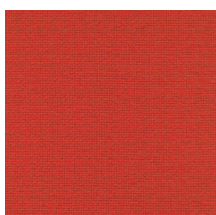
Anthracit FL835



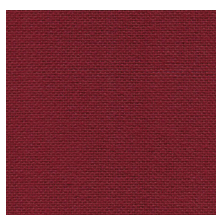
Hideaway FL824



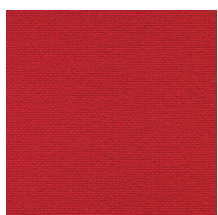
Manor FL823



Lookout FL825



Bingham FL801



Redstone FL076

## SPECIFIKATIONER

Composition	100% Flame Retardant Polypropylene
Light fastness	6 (ISO 105 - B02)
Guarantee	10 years

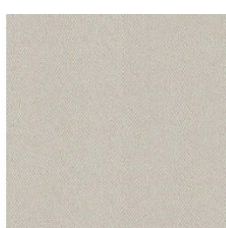
### Flammability

EN 1021 - 1&2 (cigarette & match)  
BS 7176 Low Hazard  
DIN 4102 B1  
ÖNORM B 3825 & A 3800-1 (58kg/m<sup>3</sup> CMHR Foam)  
UNI 9175 Classe 1 IM  
EN 13501-1 Adhered Class B, s1, d0  
EN 13501-1 Un-adhered Class B/C, s1, d0





CSE30  
Transition



CSE01  
Futurist



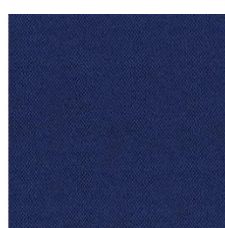
CSE38  
Allowance



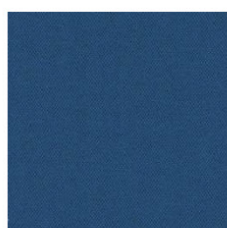
CSE39  
Youth



CSE20  
Aeon



CSE40  
Maturity



CSE15  
Stage



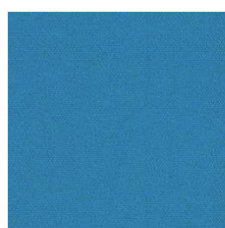
CSE08  
Chapter



CSE43  
Late



CSE42  
Range



CSE10  
Everlasting



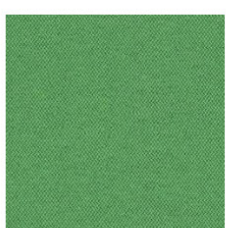
CSE12  
Perennial



CSE33  
Analogue



CSE07  
Period



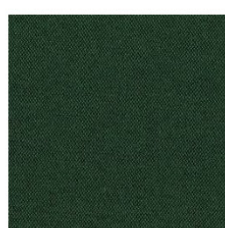
CSE18  
Event



CSE34  
Endurance



CSE16  
Timelapse



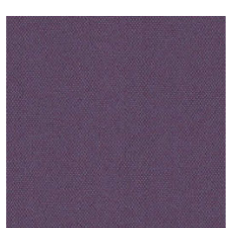
CSE35  
Signature



CSE36  
Notation



CSE37  
Rest



CSE09  
Prime



CSE41  
Quota



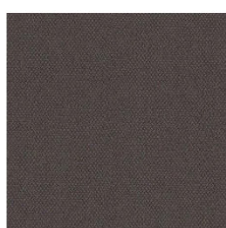
CSE23  
Occurrence



CSE13  
Present



CSE02  
Generation



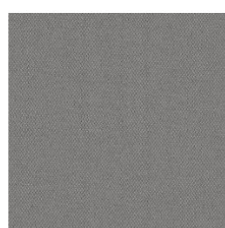
CSE21  
History



CSE46  
Memo



CSE44  
Elapse



CSE11  
Forecast



CSE31  
Splitsecond



CSE19  
Calendar



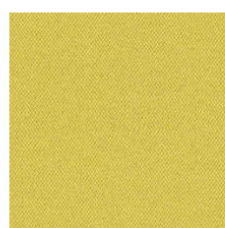
CSE25  
Sequence



CSE45  
Prompt



CSE27  
Measure



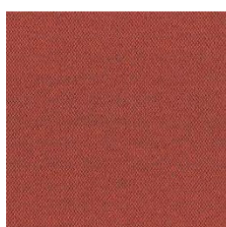
CSE03  
Lifetime



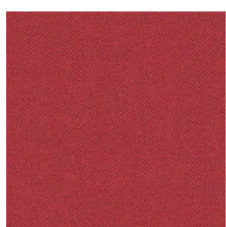
CSE32  
Occasion



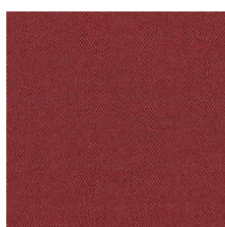
CSE05  
Span



CSE29  
Experience



CSE06  
Cycle



CSE28  
Extent



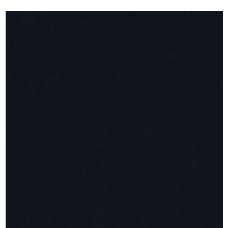
CSE26  
Turn



CSE17  
Phase



CSE24  
Date



CSE14  
Forward

## SPECIFIKATIONER

Composition 100% Polyester  
Light fastness 5 (ISO 105 - B02)  
Guarantee 10 years

### Flammability

EN 1021 - 1&2 (cigarette & match) / BS 7176 Low Hazard  
EN 13501-1 Adhered Class B, s1, d0 / EN 13501-1 Un-adhered Class C, s1, d0

### Optional:

BS 5852 Ignition Source 5 with EnviroFlam5 / BS 7176 Medium Hazard with EnviroFlam5  
The Furniture and Furnishing (Fire Safety) Regulations 1988  
(UK domestic cigarette and match) with EnviroFlam5  
DIN 4102 B1 with FR Treatment (Gorts) / EN 13773 Class 1 with FR Treatment (Gorts)  
BS 5867-2: Type B Curtains & Drapes with FR Treatment (Gorts)



# Crisp

GRUPPE 3



## SPECIFIKATIONER

Composition 93% New Zealand wool  
7% Polyamide

Light fastness 5-7 — scale 1-8, max. 8  
(EN ISO 105-B02)

### Flammability

BS 5852 Part 1 0,1 Cigarette & Match, The Furniture and Furnishing Regulations 1988  
BS 476 Part 7 class 2  
BS EN 1021 1&2 Cigarette and Match  
Class Uno UNI 9175 Class 1 | EMME  
CA TB 117-2013  
IMO MSC 307(88) Annex 1 part 8  
MED Certificate IMO  
IMO MSC 307(88) Annex 1 part 8 UK  
MED Certificate IMO UK  
ÖNORM A3800-B2-B3825-Q1 UK  
BS 5852 Crib 5 (option flame retardant)