

Sans

Soft work sofa

Design: Argo Tamm



MANY
DIFFERENT
SIZES



MANY
COMBINA-
TIONS



FSC
CERTIFIED
WOOD
ONLY



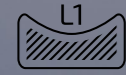
FIRE
RESISTANT
FOAM



FIRE
RESISTANT
FABRICS



5 YEAR
GUARANTEE



STRENGTH,
DURABILITY AND
SAFETY TEST

AVAILABLE
AT
pCon
PLANNER

*Sans - the perfect place
to wait a while.*



Welcome Zone

Designed for the Welcome Zone:

- Make your visitors feel at home
- Offer up moments of rest and relaxation
- Divide your space organically

Sit back and relax

Designed for use in public spaces, Sans is more than just comfortable – it's so cozy you'll probably never want to get up again!

We all want to give a good first impression, and furnishing your Welcome Zone with a Sans Sofa shows visitors you mean business, and you care about people. With soft padding and a thin metal plinth, you can have comfort even in smaller spaces.

Comfortable and practical for a communal space, the Sans is available as a classic sofa, or with an integral table. Pop down your coffee cup, lean back, and enjoy the clean lines and sociable layout.

With its modular design and high walls option, Sans can also be used to increase privacy and enhance acoustics in your Concentration Zone.



Product information

Plug-in option

Frame

Solid wood and plywood

Seat & backrest

Durable and fireproof HR-foam; seat frame with springs

Additional pillows

Feather filling; two sizes available

Legs

Powder-coated metal, colour option: black; plastic soles.

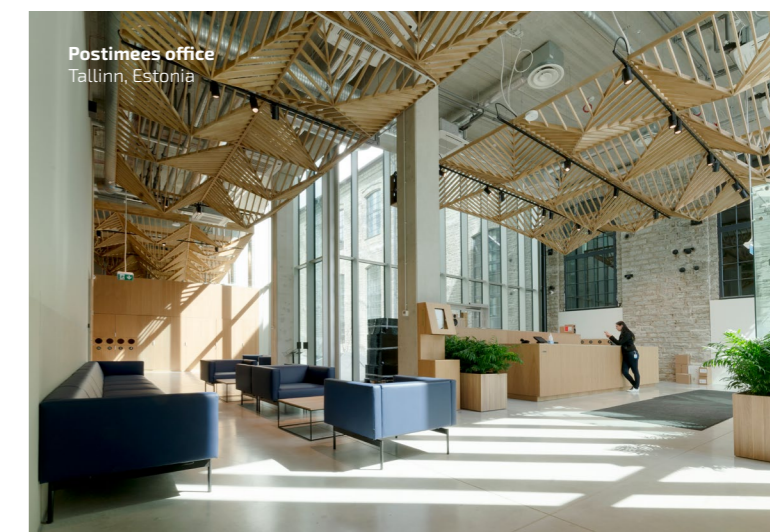
Additional information

The cover fabric is not removable; wide range of cover materials, including flame- retardant textiles

Accessories

Various additional tables; material: high-pressure laminate, colour option: black.

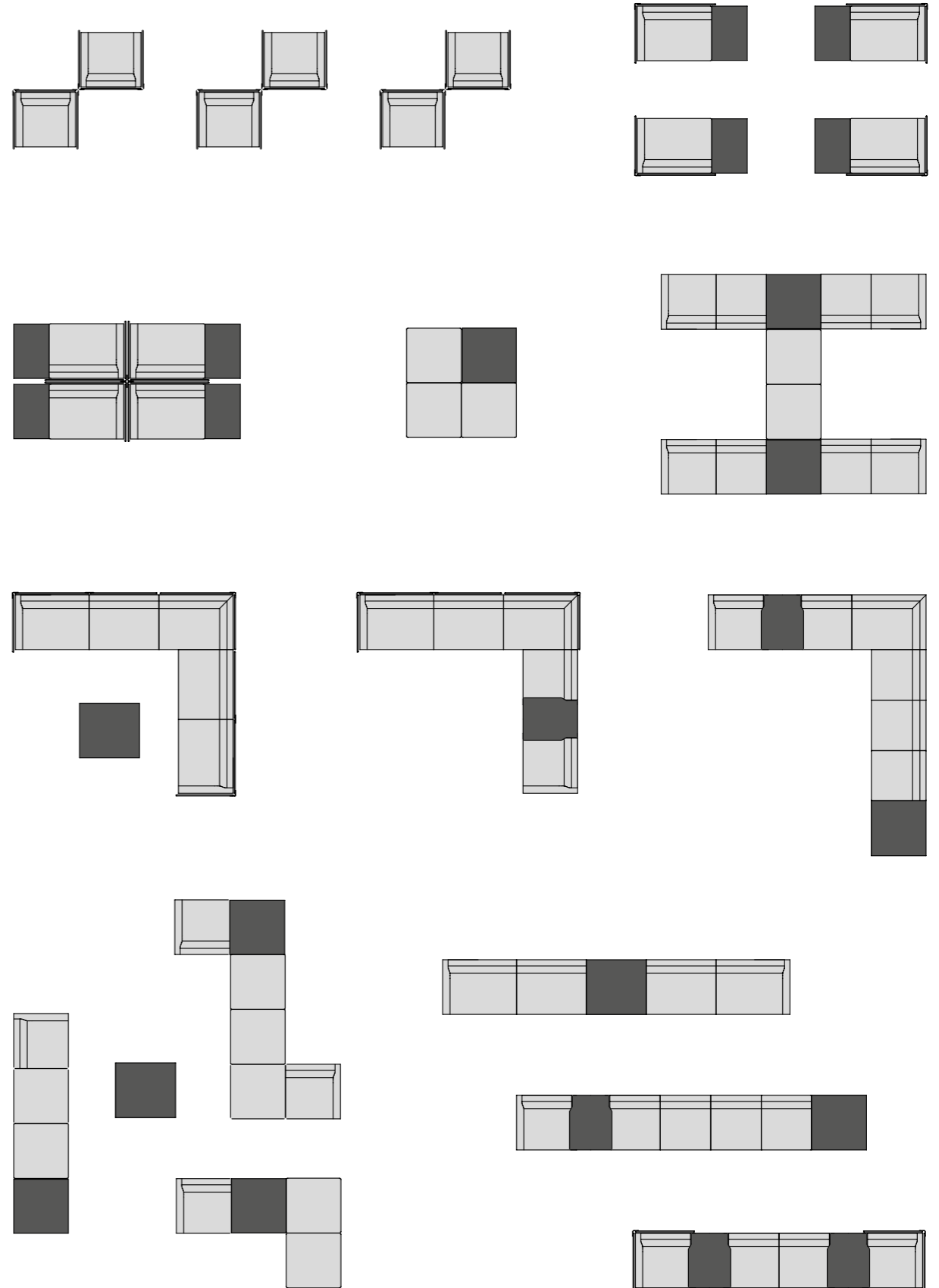
Standard Fabric Collection





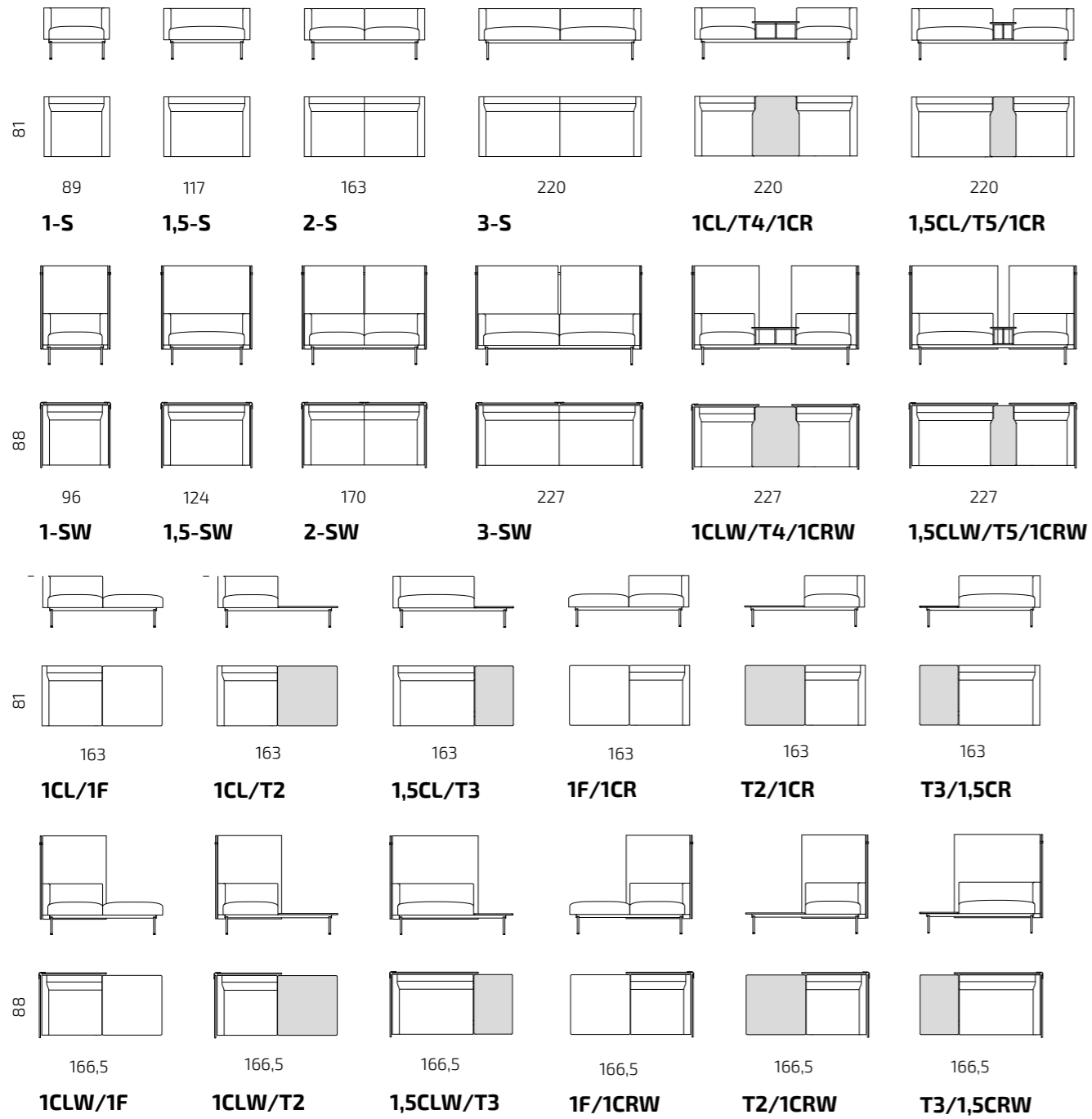
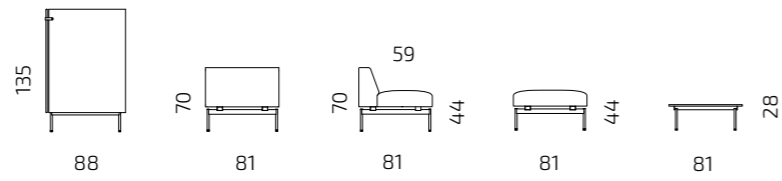


Example combinations

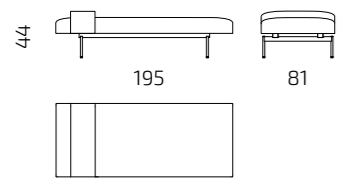


Dimensions

Individual modules

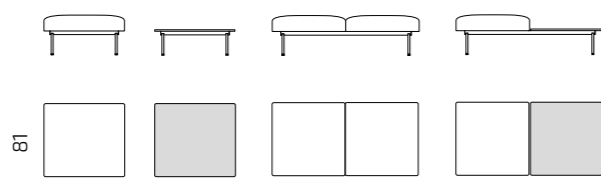


Daybed



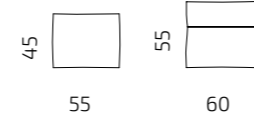
DB1

Poufs and tables



1F **T1** **2F** **1F/T2**

Additional pillows



P1 **P2**

Modules to combine

All dimensions provided in centimetres.

