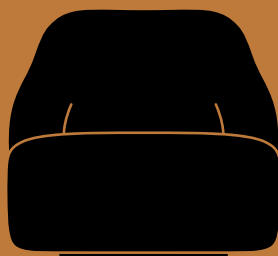


Margas ^{LC2}
Louise Liljencrantz
2022





L: 90cm / 35.4in



D: 87cm / 34.3in
Seat height: 42cm / 16.5in

H: 77cm / 30.3in

Margas^{LC2}

Louise Liljencrantz

2022

Product category

Lounge chair

Environment

Indoor

Materials

Wood, HR foam, polyester wadding, fabric upholstery.

Production process

The frame is made from solid beech and plywood and subsequently covered in HR foam and polyester wadding. Swivel base w. return function.

Colours

Black swivel and available in a variety of fabrics and COM.

Dimensions

H: 77cm / 30.3in, L: 90cm / 35.4in,
D: 87cm / 34.3in, Seating H: 42cm / 16.5in.

Packaging dimensions

H: 97cm / 38.2in, W: 97cm / 38.2in,
D: 81cm / 31.9in

Colli quantity

1 pc

Weight

Product: 32kg / Incl. packaging: 37kg

Strength, Durability and Safety Testing

The chair is tested for strength, durability and safety according to EN 16139 Level 2 - extreme contract use.

COM - Material Consumption

Fabric usage: 2.8 meters based on a 140cm roll. COM must be approved by &Tradition to ensure suitability for upholstery.

Margas LC2 is not available in leather.

Felt gliders installed as standard.

*Lead time: 2-4 weeks

Cleaning instructions

Please download our Material Care & Cleaning instructions through www.andtradition.com

Related products



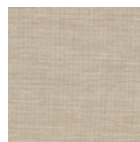
LC1



LC3



*Karakorum 001



*Clay 0011